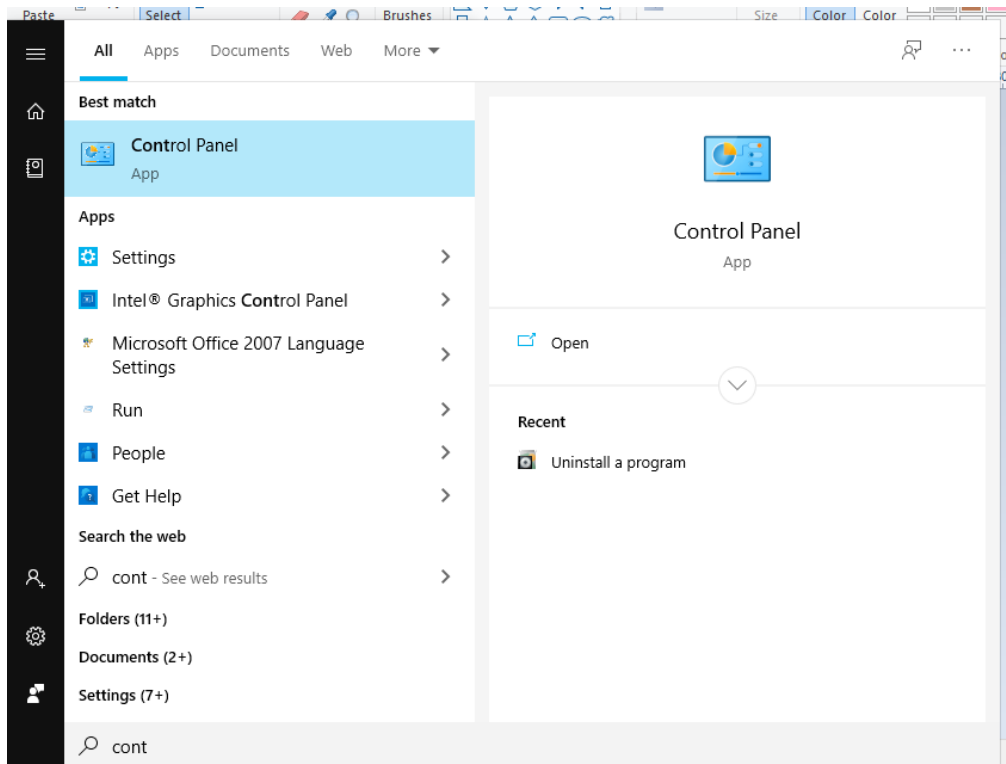
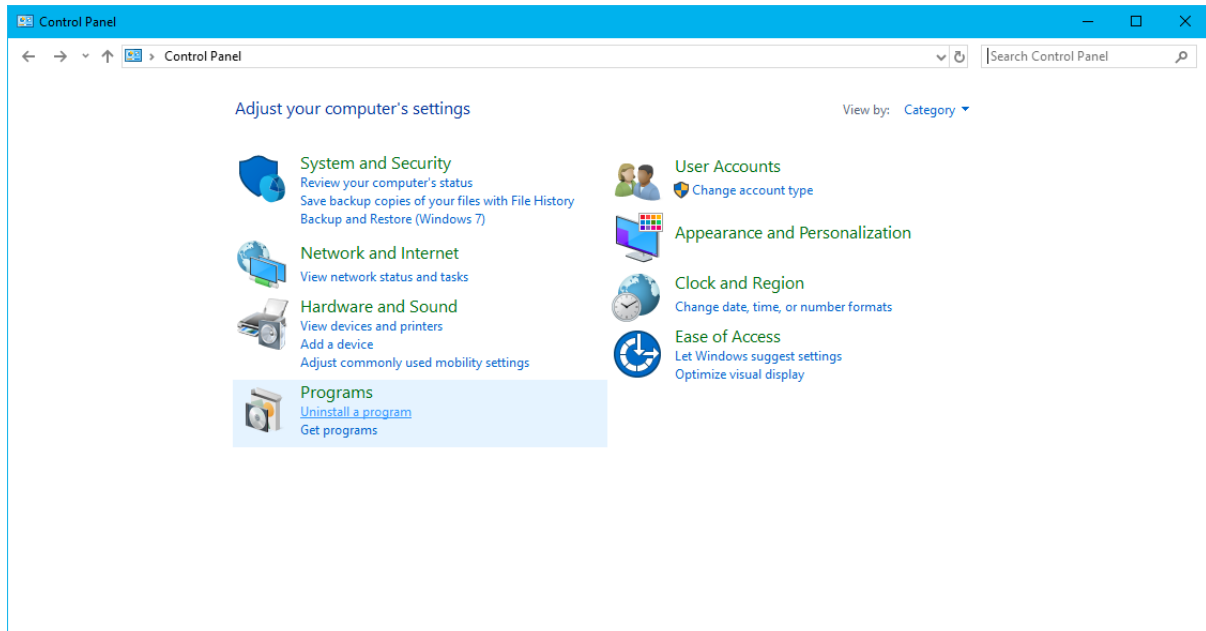


A2: Repair Primary Interop Assemblies

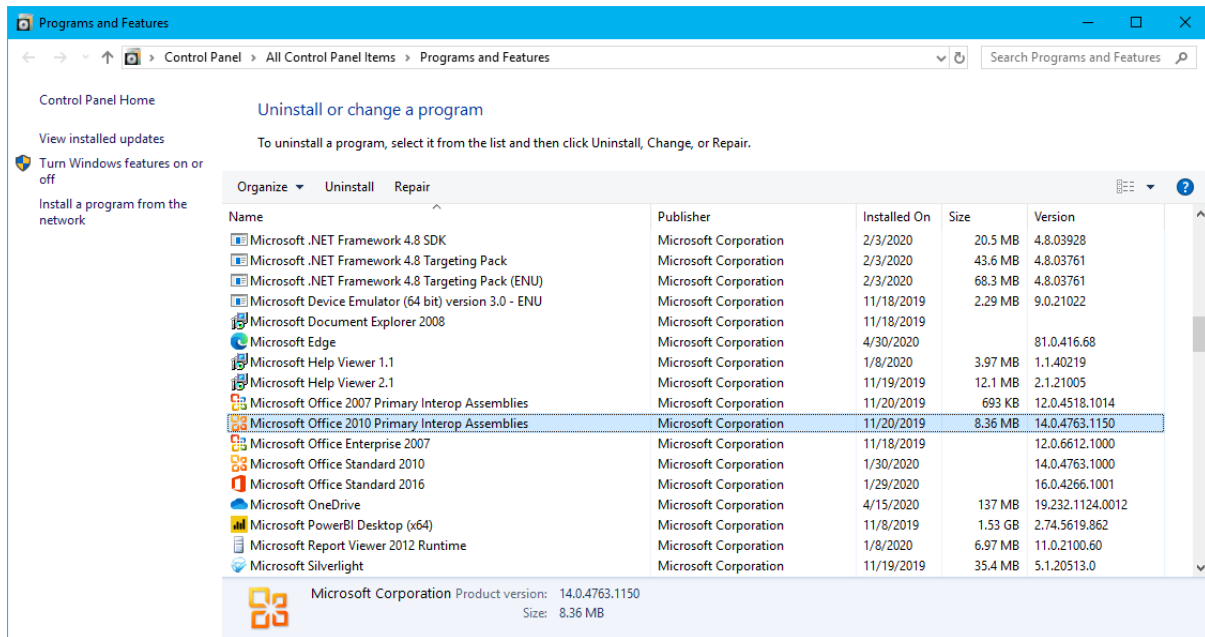
1) Go to Start Menu → type “control” and open Control Panel



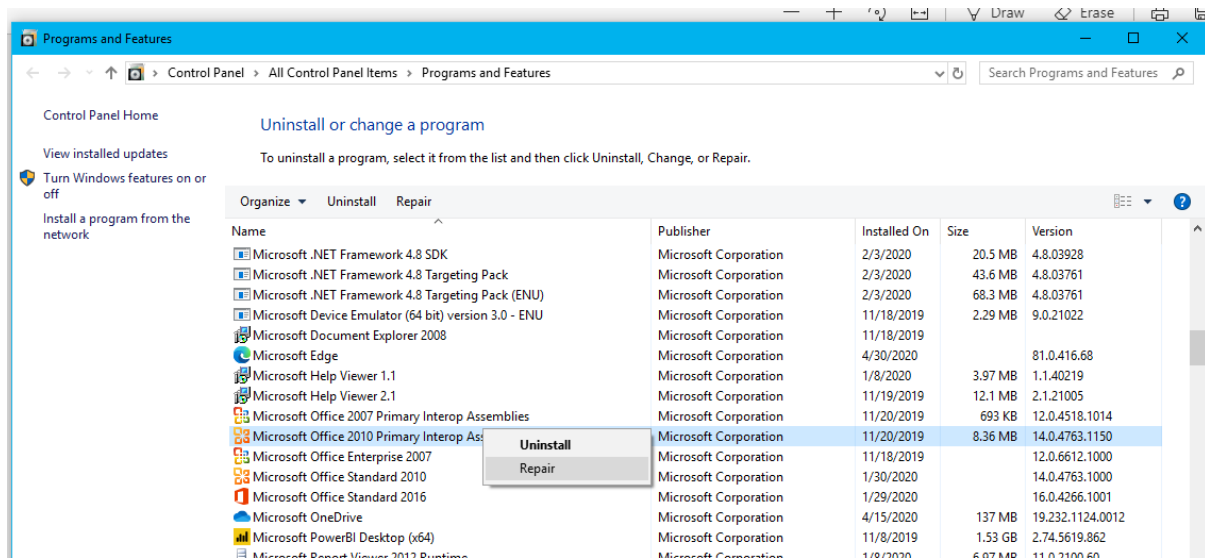
2) Go to Control Panel -> Uninstall a program



3) Scroll to Microsoft Primary Interop Assemblies as per MS Office version installed on your machine.



4) Right click on Microsoft Office Primary Interop Assemblies and choose to repair.



5) The repair process will start and will be completed after a while.